

INVESTING IN SUSTAINABLE INNOVATION

CONSCIOUS OF ENVIRONMENTAL STAKES, THE CITY COUNCIL HAS, FOR THE LAST NUMBER OF YEARS, TAKEN MEASURES TO PROTECT GREEN AREAS, REDUCE POLLUTION AND PROMOTE BIODIVERSITY :

Centralized Wood heating facility, ecological tending of green areas, "Chemin vert" eco-district, horse-drawn activity, municipal beehive, educational food garden, strawbale youth house...

It is the diversity of our experiences which produce meaning and allow for long-term collective action.



Chemin Vert eco-district

Initiated in 2014 and almost complete, the renovation of the city centre is making way for genuine development of a new city heart, modern and attractive : revitalize doorstep businesses, enhance links between public services, improve social and urban diversity, and widen the housing offer.

But the council's ambition does not end here. Other projects are in store : new housing development schemes, a long-term health scheme for local businesses, an urban farm project to provide the central kitchen with organic vegetables.



Strawbale youth house



The new town center



Horse-drawn activity

THIS IS WHERE IT HAPPENS

- 1st stop of the Normandy cycle tour 2017
- Youth Chess France championship 2016
- Double dutch french cup 2016
- Disabled Athletics France Championship - 2004
- "du grain à démoudre" international film festival since 1999

GONFREVILLE L'ORCHER RECOGNIZED OUTSIDE

- 4 Star orange pavilion, (2009 to 2017) for major risks prevention policy
- Sustainable town prize 2016 – Eco-Mayor's trophy
- Fredon 3 drops label 2014 for ecological gardening of green areas
Playful town 2nd prize - mayors show 2016
- Most sporty town 2003 of "l'Équipe" magazine's (-20 000 inhabitants category)



Townhall
Place Jean-Jaurès - BP 95 / 76700 Gonfreville l'Orcher
tél. +33 (0)2 35 13 18 00
www.gonfreville-l-orcher.fr / culture.gonfreville-l-orcher.fr / jeunesgonfrevillais.fr

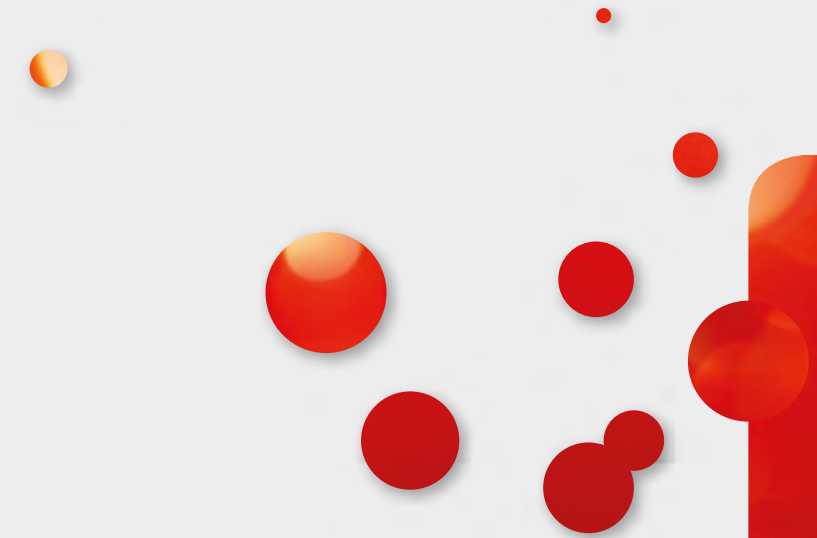
Follow us on :



Texts: Carole Meunier / Pictures: ©Stéphanie Pouteau-Dobits & Pascal Cole / Design: Sabine Turpin

GONFREVILLE L'ORCHER LET'S CULTIVATE THE TOWN

GONFREVILLE-L-ORCHER.FR



GONFREVILLE L'ORCHER

A HERITAGE OF VALUES

IN THE LATE 19TH CENTURY, GONFREVILLE-L'ORCHER IS BUT A LARGE VILLAGE DESPITE THE PRESENCE OF IMPORTANT WORK PLACES SUCH AS THE BASSOT FOUNDRY AND THE ROPE FACTORY IN THE NEARBY HAMLET OF GOURNAY-EN-CAUX. The Schneider plant layout in Mayville followed by that of the French Refinery Company will come to change the town's landscape and make way for a major bastion of struggle and claim during social movements. Gonfreville l'Orcher is still one of today's french major industrial towns. The end of world war 2 will strike new growth. Overlooking the Seine Estuary, the plateau spawns interest for the american army which sets up transit camps for its GI's in 1944. After departure of the troops, families stricken by Le Havre bombing move into the barracks. In a few months, the population rises from 4440 to 8000. These temporary bunkhouses, lasting until the early 80's, have carved a strong part of the Gonfrevillese identity, made of pugnacity and courage.



The temporary barracks...



... restored today to become a space of memory

THE WORD
OF THE MAYOR
& DEPARTMENT
CONSELMOR

AS YOU WILL RECOGNIZE IN THIS LEAFLET, THE IDENTITY OF GONFREVILLE L'ORCHER IS INSEPARABLE FROM ITS HISTORY. The history of a working class town, a town of solidarity, from post war up to now. But it is also a history of councils which followed one another with the ambition to offer services worthy of the name, innovative and effective facilities, and support non-profit initiatives. But this leaflet is also here to remind of the importance of the communal scale for effective governing of our regions. The council, its premises, its everyday services, are the essence of proximity. It remains the best means to prevent the market world to shatter our everyday capacity to live together. But is essential that it continues to have access to the necessary means to maintain this bond with the population, to fully play its role.

Alban Bruneau



Hibakusha mural



Coffee-encounter with the mayor, Alban Brueau

GONFREVILLE L'ORCHER IS ABOVE ALL A HUMAN COMMUNITY, WELDED BY THE HISTORY OF ITS TEMPORARY HOUSES, WITH A SPIRIT OF SHARING AND ACTIVE ENGAGEMENT. This culture of citizenship is found today among actions and projects led by the municipality and jointly with its inhabitants. Member of the "French commune association", and "departments and regions for peace", the town has always expressed active solidarity with oppressed peoples. Here, actions are undertaken to support the Palestinian and Sahraoui peoples. From the tribute to the victims of first world war to the welcoming of the Hibakusha's (survivors of Hiroshima and Nagasaki bombings), there is a need to maintain our memory of past tragedies, so as not to experience them some other day.

A TOWN OF PROXIMITY
HUMANITY & SOLIDARITY

A SPORTIVE,
CULTURAL & FESTIVE TOWN !

AFTER WORLD WAR 2, THE URBANIZATION OF THE TOWN STARTS AROUND ITS SPORT FACILITIES. Leisure sport, high level sport, life-school sport, sport has always taken an important part in the life of the town.

Thanks to its first range facilities, its school sport teachers, and the dynamism of its global sport activity, the town has received the prize of the most sporty town from the well known magazine "L'équipe". The town has also at heart to provide equal access to Culture. This political engagement was embodied by the construction of cultural facilities (media center, concert hall, leisure and cultural exchange center) and the setting up of a favorable price policy. Cultural life in Gonfreville l'Orcher means also a music and dance school, sewing and computer schools, and the "du grain à démoudre" international film festival managed by young passionates. In Gonfreville l'Orcher, we like to party... Many friendly events take place throughout the year : Game day, Town day, sports tournaments, festivals... So many occasions for encouraging debates, easing the expression of local talents, and invigorating friendly ties.



Town Day



Municipal Music School



ESMGO basketball match